

Comments on the
Three Options now being considered

The Thames Path Missing-Link

A continuous Riverside Promenade from Thames Hotel to Bridge Gardens
Agreed by the Maidenhead Borough in 1950

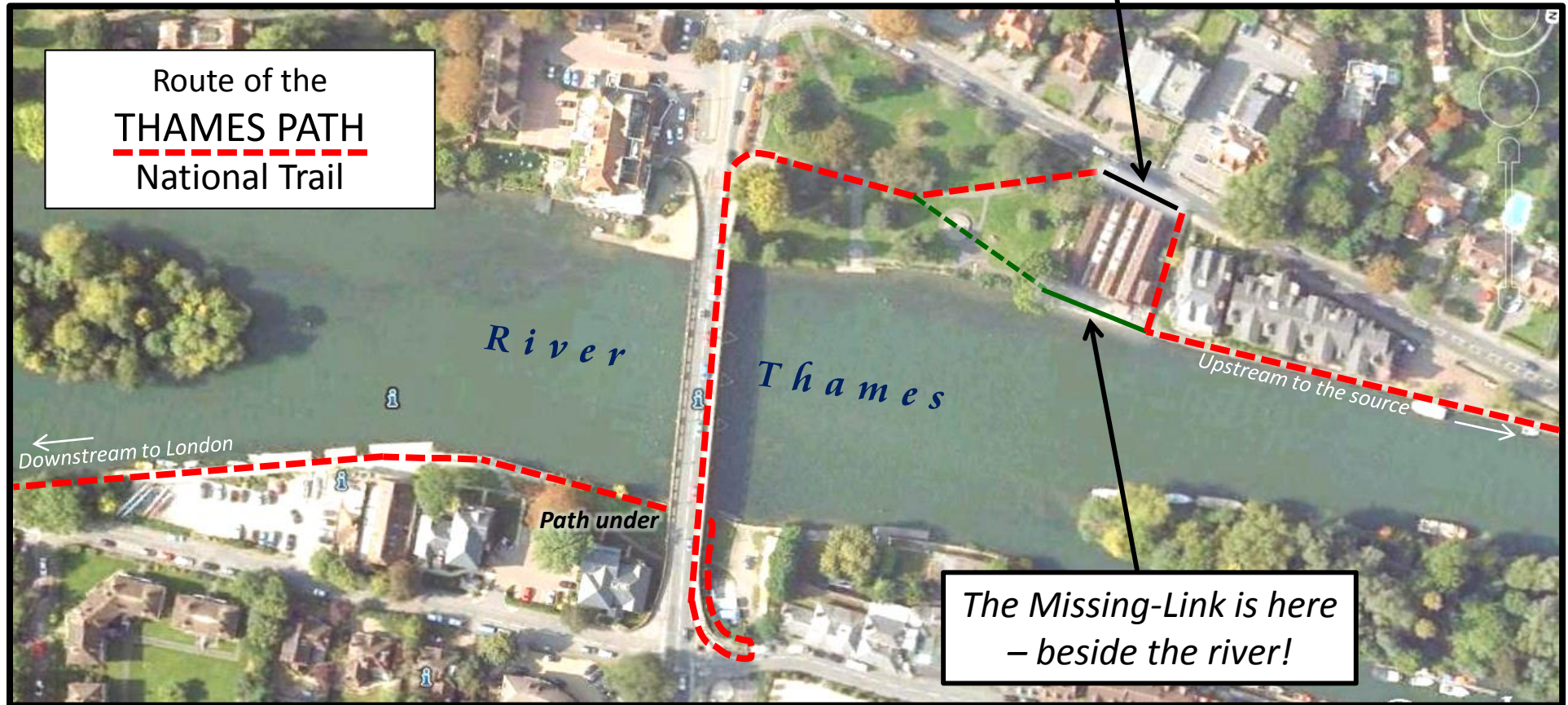
Prepared by the Ramblers with support from -
The Maidenhead Civic Society,
River Thames Society,
Maidenhead Rotary Club,
Open Spaces Society, and others
Incl. The Right Honourable Theresa May MP

May 2014

- ✓ Supported by the Countryside Commission 1990
- ✓ Supported by Berkshire County Council 1990
- ✓ Adopted as Corporate Policy of Council 1995
 - ✓ Supported by Local Plan Policy 1999
- ✓ Included in the Rights of Way Improvement Plan 2005

OPTION 1 ✓
Riverside path

The 'Missing-Link', being continually referred to, is not a gap in the roadside pavement here.

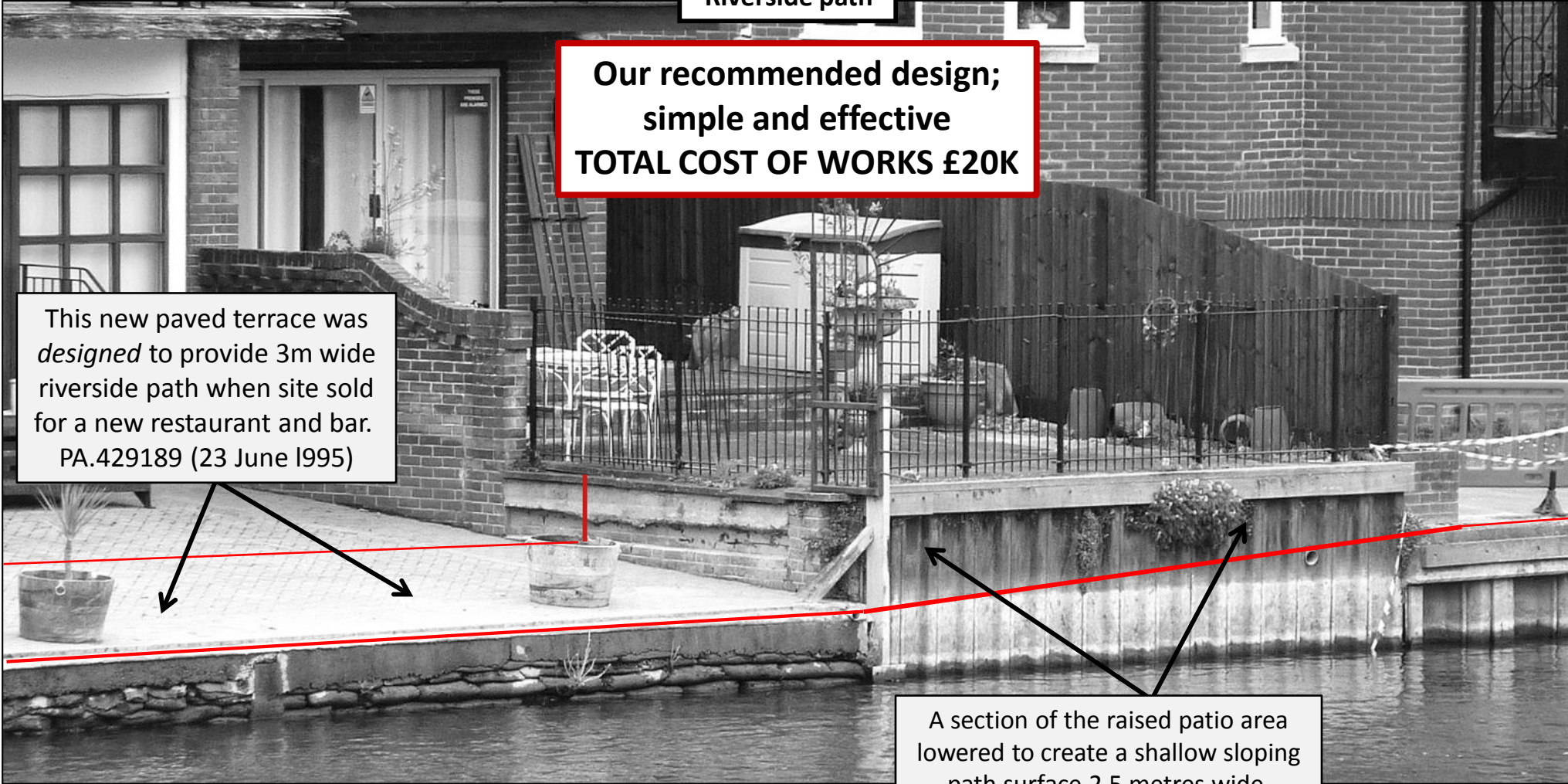


OPTION 1 ✓
Riverside path

**Our recommended design;
simple and effective
TOTAL COST OF WORKS £20K**

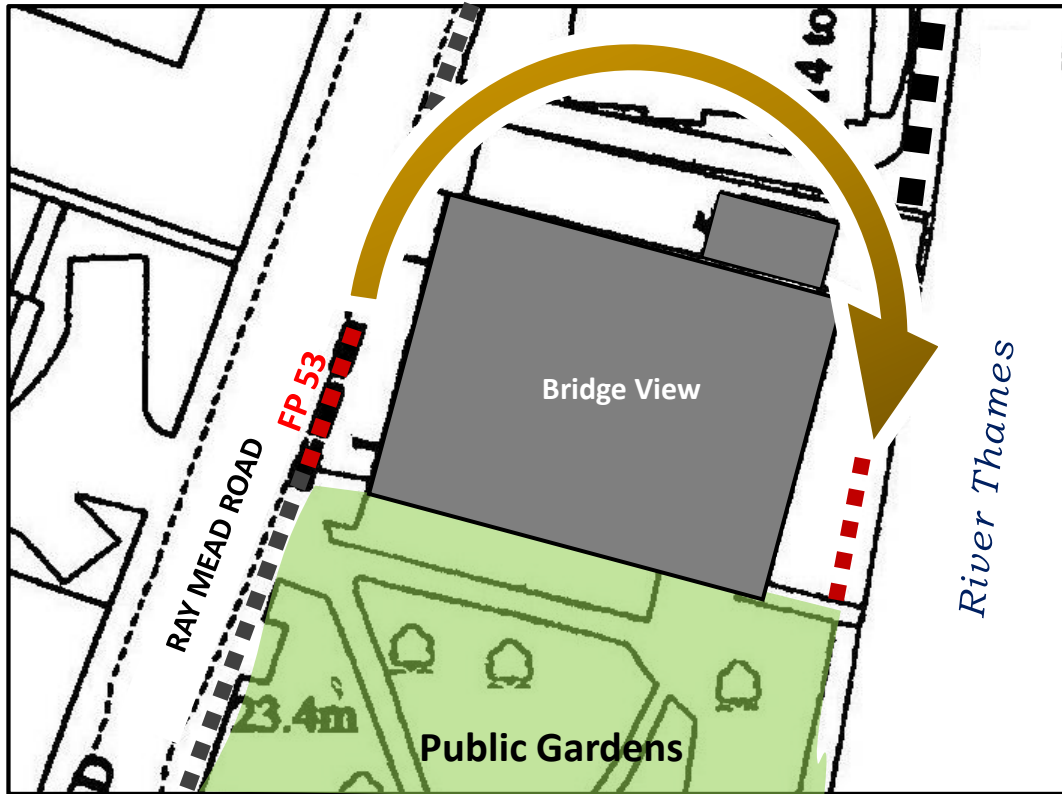
This new paved terrace was designed to provide 3m wide riverside path when site sold for a new restaurant and bar. PA.429189 (23 June 1995)

A section of the raised patio area lowered to create a shallow sloping path surface 2.5 metres wide.



No raised, vastly expensive and unnecessary board-walk, please
The original design cost of £20k should remain. A £100k raised boardwalk would be intrusive, an unnecessary hazard when wet - and costly to maintain in a flood area.

OPTION 1 ✓
Riverside path



NOTE: Residents have no access to the disused slipway below, their enjoyment of the river is from 1st floor balconies

FOOTPATH 53 - transferred over onto old slipway

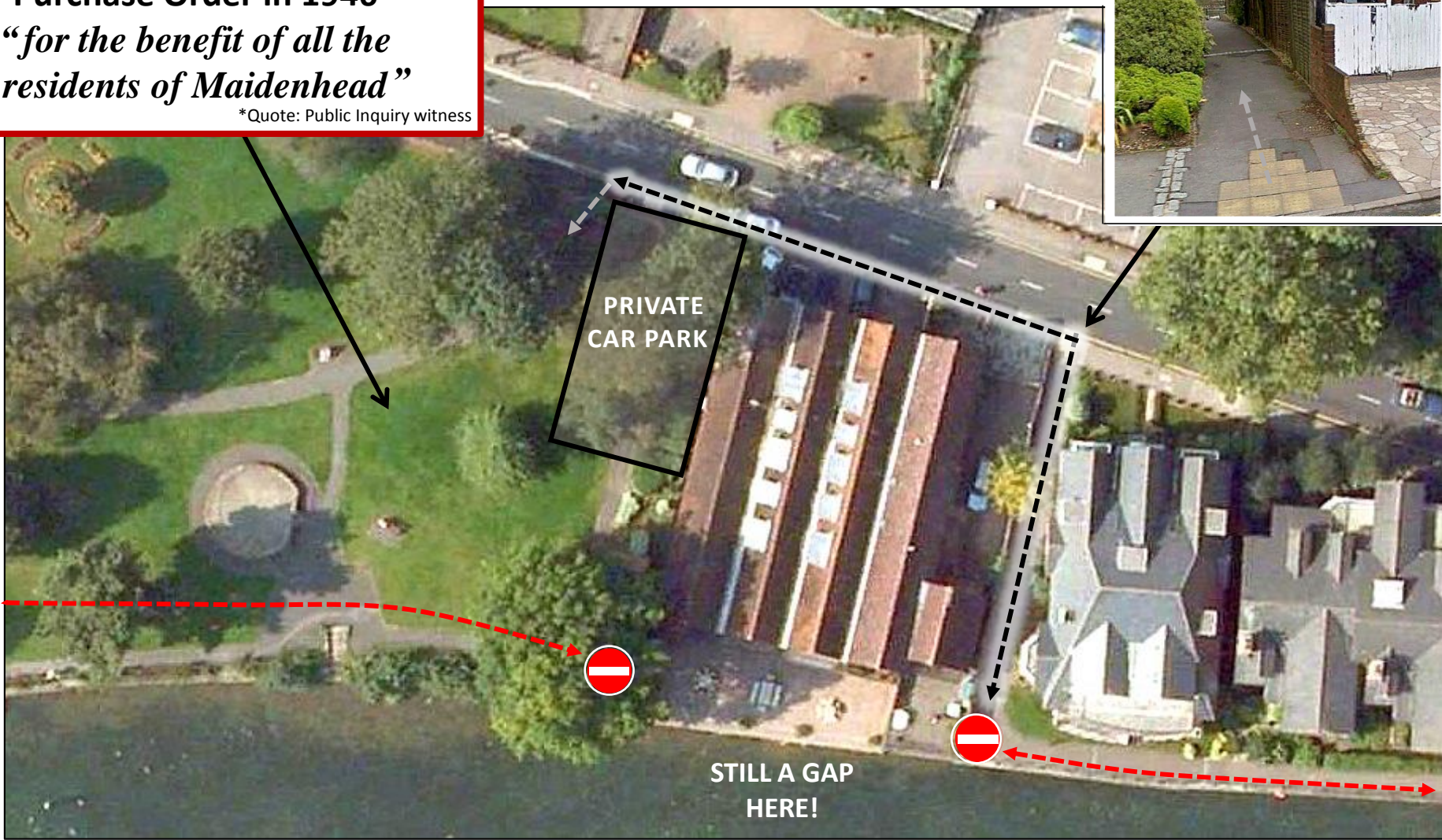
... frees-up frontage for legitimate car parking



OPTION 2 ~~X~~
Roadside path

BRIDGE GARDENS
Secured through a Compulsory
Purchase Order in 1946
*“for the benefit of all the
residents of Maidenhead”*
*Quote: Public Inquiry witness

*It is not obvious to visitors that
this passage here will bring
them back onto the riverside*



PRIVATE
CAR PARK

STILL A GAP
HERE!

OPTION 2 ✖

Roadside path

BRIDGE GARDENS

Acquired by
Compulsory Purchase Order
Public Inquiry 11th December 1945
Following an application by the
Borough Council

*“... situated at the gateway of Maidenhead,
- it offered an attraction quite unique”*

*Quote: Public Inquiry witness



**Any attempt to destroy these
gardens would be met with
public outrage!**

OPTION 2 ✖
Roadside path



The Offices, Flat 1 and Flat 2 have insufficient legitimate space for car-parking

EXTENT OF PUBLIC FOOTPATH No 53

***PLEASE NOTE:** Contrary to the officers report (Appendix B) we suggest the Council is under no obligation to provide compensation to these residents for loss of rights that they do not possess.*

**Total cost of works:
Roadside route £105K**

**Total cost of works:
Riverside route £20K**

OPTION 2
Roadside path



*A longer
roadside walk from
gardens here*


Extent of car park for residents and the offices at Bridge View

OPTION 2

Roadside path

OPTION 3

River Pontoon

 *Neither of these option are supported
by the following organisations:*

Ramblers National Office
Maidenhead Civic Society
Open Spaces Society
River Thames Society
Natural England
Maidenhead Rotary Club
River Users Group
Disabled Ramblers



The future route of this iconic National Trail through Maidenhead should be debated openly at a Public Inquiry and be determined impartially by a DOE Inspector.

Natural England has offered the same staff support as provided to the West Berkshire Council for their 40m Missing Link at Purley.

Thank you